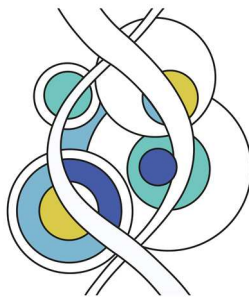


Lochgilhead Medical Centre
Mid Argyll Community Hospital
& Integrated Care Centre
Blarbuie Road
Lochgilhead
Argyll
PA31 8JZ



Appointments 01546 462001
Enquiries 01546 462002
Prescriptions 01546 462003

Email lochgilhead.surgery@nhs.scot

Dr S V Hutchinson Dr J Henderson Dr A J Strain
Dr B O'Neill Dr L Cameron Dr A R Barlow Dr J Barge

PRIVATE REFERRALS – INFORMATION FOR PATIENTS

If you are thinking about using a private health provider, either by self-funding or private health insurance, we strongly advise you to first consider the information held within this patient information leaflet.

Please be aware that your GP practice is contracted to provide National Health Services, in line with a General Medical Services (GMS) contract, on behalf of NHS Highland. It is not contracted nor obliged to provide private services out with this contract.

What happens if you need a test or procedure?

If the private specialist thinks that you need any tests (including blood tests), or a surgical procedure, **they are responsible** for:

- Arranging the test and any medications that might be needed for this.
- Organising how and when you will receive a date of any procedure and what to do if the date is not suitable for you.
- Giving you your results and explaining what they mean. It is the requesting private clinician's responsibility to discuss all tests and investigations directly with you. Please do not contact your GP to discuss these results. We will not offer interpretation for scans and tests we did not arrange.

The cost of these tests should be paid for within the private sector, which may increase the costs you incur. You may also need to travel to where you saw the specialist.

GP practices are not able to perform private blood tests or investigations using NHS resources.

A private GP or specialist can refer directly to NHS secondary care services and therefore should not expect your GP practice to do this for you, on their behalf.

What happens if you need new medicines?

The private specialist might suggest prescribing new medicines for you or may make changes and alterations to medicines that you are already taking. If the consultant recommends a new medication be started, they should write to the GP outlining the reasons for treatment. In most circumstances, the GP may be willing to continue prescribing the medication. Please allow at least 1 week for this to be processed by the surgery.

Private specialists may suggest medications to patients which would not normally be prescribed by NHS GPs. This relates to medications which are not included in NHS Highland prescribing formulary or medications that can only be prescribed by secondary care specialists as they often require regular monitoring (common examples include disease modifying anti-rheumatoid drugs, some psychiatric medications, medications for ADHD). This includes medications that are unlicensed to treat certain medical conditions.

If either the private specialist, or GP, informs you that this is the case for your specific medication, you will need to continue to receive it from the private service. Please contact the private service directly to organize. Any community pharmacy can dispense a private prescription, they will charge you for the cost of the medication and a professional fee for dispensing your medicine.

What do I do if I have any questions?

If you have any specific questions related to your care, you should contact the private specialist's team directly. It is important that you make sure you know how you can contact your private provider.

This leaflet has been developed using information from the Highland LMC, British Medical Association and NHS Information Sources.

Helpful Links:

<https://www.nhsinform.scot/tests-and-treatments/surgical-procedures/surgery-abroad-without-nhs-referral>

<https://www.nhs.uk/common-health-questions/nhs-services-and-treatments/if-i-pay-for-private-treatment-how-will-my-nhs-care-be-affected>

<https://www.nhsinform.scot/care-support-and-rights/health-rights/fit-notes/getting-a-fit-note>